

## RheB

**Catalog Number:** 21098

**Gene Symbol:** RHEB

**Description:** Anti-RheB Rabbit Polyclonal Antibody

**Background:** Small GTPases are a super-family of cellular signaling regulators. RheB is a member of the Ras-superfamily GTPases. RheB has been shown to interact with C-Raf, Mammalian target of rapamycin (mTOR), TSC2, Ataxia telangiectasia mutated (ATM), KIAA1303 and Ataxia telangiectasia and Rad3 related (ATR).

**Immunogen:** A synthetic peptide from the C-terminal region of human RheB

**Tested Applications:** ELISA, WB, IHC

**Recommended Dilutions:**

ELISA: 1:1000-1:5000

WB: 1:100-1:1000

IHC: 1:100-1:1000

**Concentration:** 0.2 mg/ml

**Host:** Rabbit

**Clonality:** Polyclonal

**Purity:** Purified from antisera

**Format:** Liquid

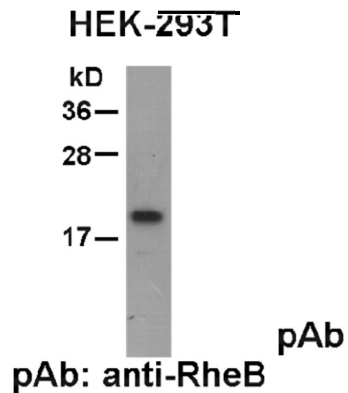
**Preservative:** No

**Constituents:** PBS (without Mg<sup>2+</sup> and Ca<sup>2+</sup>), pH7.4, 150 mM NaCl, 50% glycerol

**Species Reactivity:** Anti-RheB antibody recognizes RheB of vertebrates.

**Storage Conditions:** Store at -20°C. Avoid freeze/thaw cycles

### Western blot:



### Western blot analysis of RheB proteins.

Whole-cell lysate of HEK-293T cells was used for western blot with the polyclonal anti-RheB antibody (Cat. # 21098).